

PETI Read API

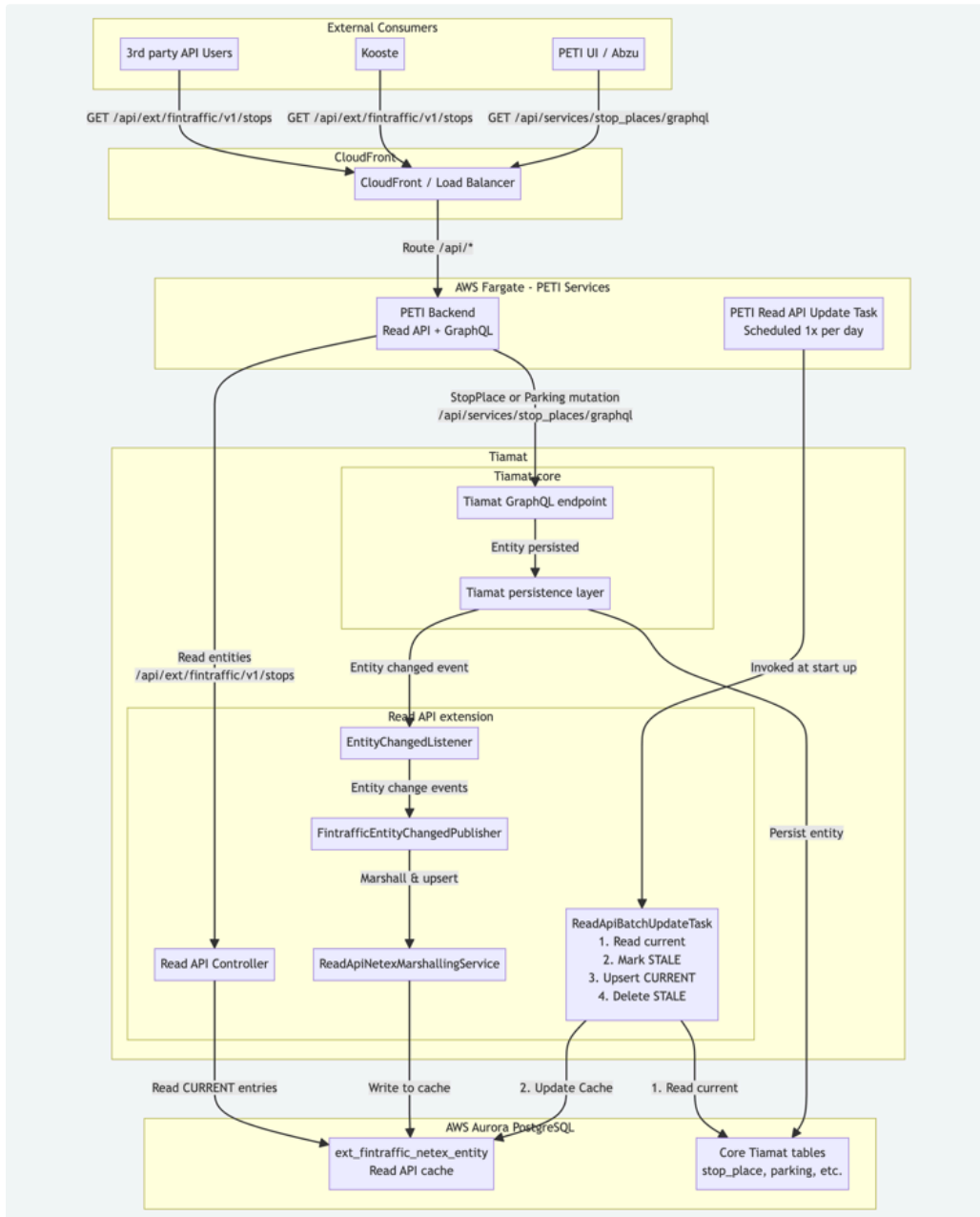
PETI / Fintraffic Read API v1

Introduction and rationale

Fintraffic Read API v1 (also referred to as PETI Read API) is a public, read-only API for fast access to Stop Place data returned as NeTEx XML. Tiamat's internal persistence model utilizes Hibernate and querying large data sets is inefficient. To avoid those limitations, the Read API is served from a dedicated PostgreSQL cache table that contains pre-materialized NeTEx XML plus search keys for efficient querying.

- Fast, predictable reads for external clients
- Read-only surface area (no write operations)
- Cache kept up to date through
 - event-driven updates (near real-time)
 - a nightly repopulation job (full correctness rebuild)
- No changes required to Tiamat internal entities / Hibernate mapping layer

Overall system architecture



Read API documentation in Tiamat GitHub repository

Technical documentation for the Read API is within the tiamat code.

<https://github.com/tmfg/tiamat/blob/master/src/ext/resources/docs/fintraffic-read-api.md>

API documentation

[PETI public APIs](#)

