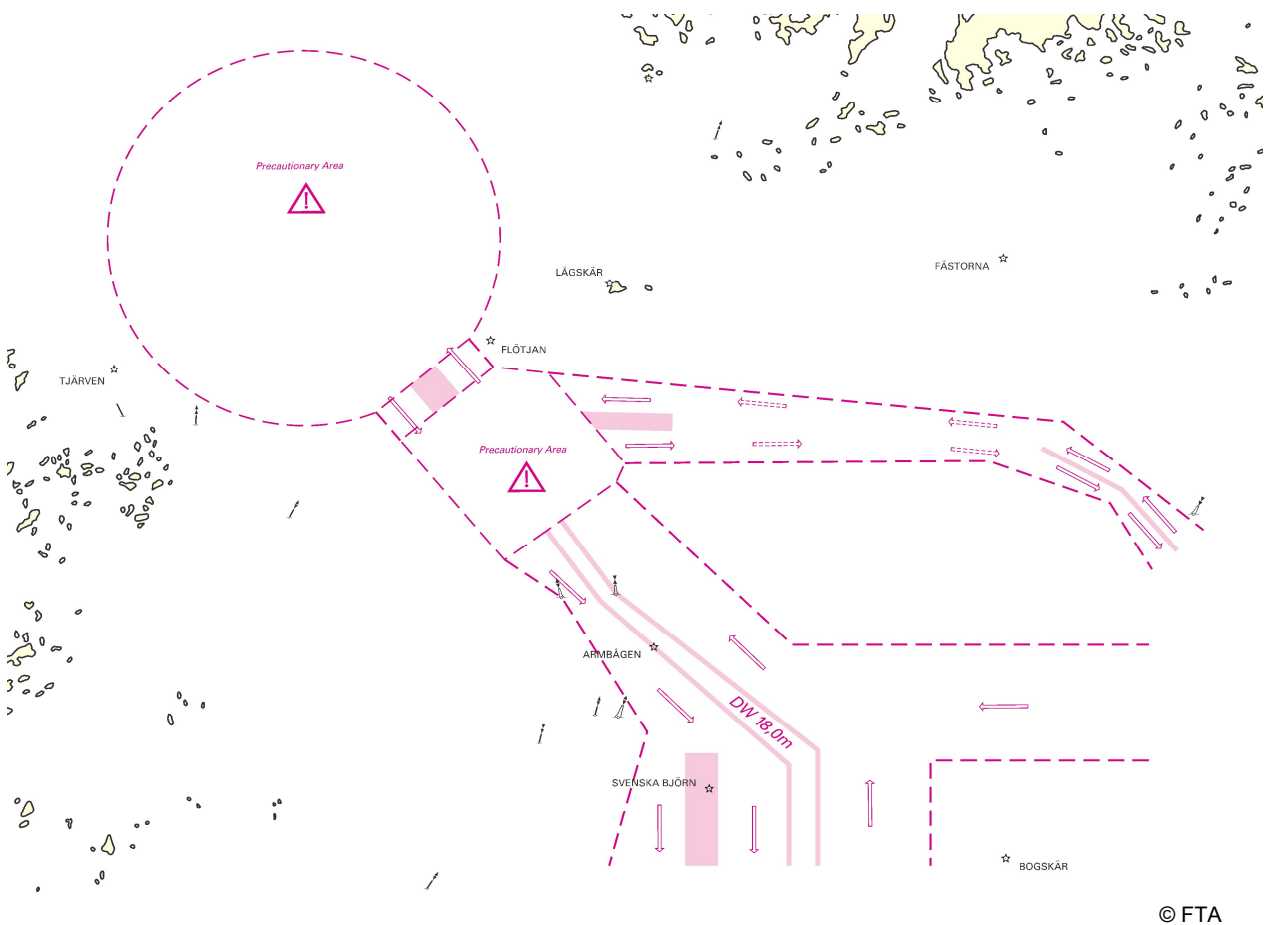


# MASTER'S GUIDE

## Åland Sea TSS

### AREA OF THE SOUTHERN ÅLAND SEA TSS

The Åland Sea TSS is described in the IMO COLREG.2/Circ. 60 Annex 2.



### MONITORING OF THE SOUTHERN ÅLAND SEA TSS

Southern Åland Sea TSS is monitored by Åland Sea Traffic, which is operated by Fintraffic Vessel Traffic Services Ltd. Åland Sea Traffic operates in the Western Finland Vessel Traffic Centre, which is located in Turku.

The main goal is to enhance safety at sea and the supervision of the COLREGs. Vessel traffic is monitored by AIS.

19.1.2023

Åland Sea TSS

## **VIOLATIONS**

Åland Sea Traffic contacts vessels proactively in order to increase safety and to prevent violations. Vessels are contacted via VHF 16 prior to any COLREG violation. All violations will be reported to the authorities.

When using the DW route, deviating from it is not allowed.

## **CONTACT INFORMATION**

Western Finland Vessel Traffic Centre  
Juhana Herttuan puistokatu 21  
FIN-20101 Turku

Telephone: +358 20 448 6400 (all phone calls will be recorded)  
MMSI: 002300230  
E-mail: [turku.radio@fintraffic.fi](mailto:turku.radio@fintraffic.fi)  
VHF ch. 16